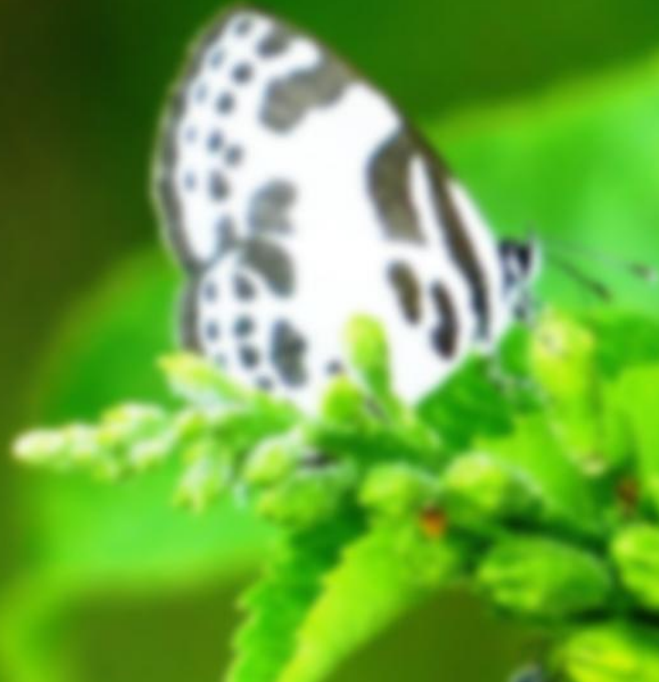


Butterflies of High Range Mountain Landscape, Munnar

A Literature Review



Sálim Ali Centre for Ornithology and Natural History, Coimbatore – 641 108

November 2015

Butterflies of Munnar High Range Mountain Landscape

-A Literature Review

Project Plant- Animal (birds and butterflies) community studies in various landscape elements of Munnar High Range Mountain Landscape

Principal Investigators Dr. Arun P R
Dr. Karunakaran P V &
Dr. Balakrishnan P

Research Staff: Mr. Anoop Raj P N
Mr. Ramesh kumar S &
Dr Ramarajan S

Funding Agency: UNDP



Sálim Ali Centre for Ornithology and Natural History

November 2015

CONTENTS

1	Introduction	5
2	Review of Literature.....	7
3	Butterflies of protected areas in High Ranges.....	8
3.1	Chinnar Wildlife Sanctuary	8
3.2	Eravikulam National Park.....	9
3.3	Thattekkad Bird Sanctuary	10
3.4	Idukki Wildlife Sanctuary.....	11
3.5	Mannavan shola National Park.....	12
4	References	14

TABLES

Table 1 List of Butterflies Recorded in Protected Areas of Study area.....	7
Table 2 Endemic butterflies of Chinnar WLS	8
Table 3 Endemic butterflies of Eravikulam NP	9
Table 4 Endemic butterflies of Thattekkad Bird Sanctuary.....	10
Table 5 Endemic butterflies of Idukki Wild Sanctuary.....	12
Table 6 Endemic butterflies of Mannavan shola National Park	13
Table 7 List of Butterflies recorded in HRML	15

FIGURES

Figure 1 Munnar High Range Mountain Landscape	6
Figure 2 Family-wise distribution of butterflies in Chinnar WLS	8
Figure 3 Family-wise distribution of butterflies in Eravikulam NP	9
Figure 4 Family wise distribution of butterflies in Thattekkad Bird Sanctuary.....	10
Figure 5 Family wise distribution of butterflies in Idukki wildlife Sanctuary	11
Figure 6 Family wise distribution of butterflies in Mannavan shola National park	12

1 INTRODUCTION

The scenic landscape of High Ranges is located in the northern part of the Southern Western Ghats. It encompasses three sub regions namely, the central high range (Kannan Devan Hills), the Eastern Anjanad Valley (Marayoor) and the western Pooyamkutty –Idamalayar valleys. As acclaimed ecologist and environmentalist Dr.Sathis Chandran Nair states while describing the High Ranges, “The widest reaches of the Western Ghats in Kerala is the High Ranges. It is also the highest reaches”. Most of the forests of high ranges are on the western slopes drained by Idamalayar and Pooyamkutty Rivers and their valleys. The River originates from the eastern side of Kannan Devan Hills are drained into Amaravathi River through Chinnar.

The forest types of High Ranges include high elevation montane-forests and grasslands, humid and high elevation forests, humid mid elevation and humid low elevation evergreen forests in the windward side and dry forests in the Anjanad Valley. The present land use pattern of high ranges include Protected areas (Eravikulam National Park, Chinnar Wildlife Sanctuary, Kurinjimala Wildlife Sanctuary, Anaimudi National Park, Pampadum shola National Park, Mathikettan shola National Park, Thattekkad Bird Sanctuary and Idukki Wildlife Sanctuary), non protected areas such as Malayattoor, Kothamangalam, Mankulam, Munnar, Marayoor and Kottayam Forest Divisions which encompasses vast stretches of High Value Biodiversity Areas, commercial plantations such as tea, Cardamom, and coffee, mixed cultivation area or human dominated home gardens, tribal settlements, river valley projects and urban/peri-urban areas.

High range Mountain landscape with its heterogeneous landscape it supports rich biodiversity. Based on the available literature there are at least 254 species of butterflies reported in the Munnar landscape, in which 27 are endemic.

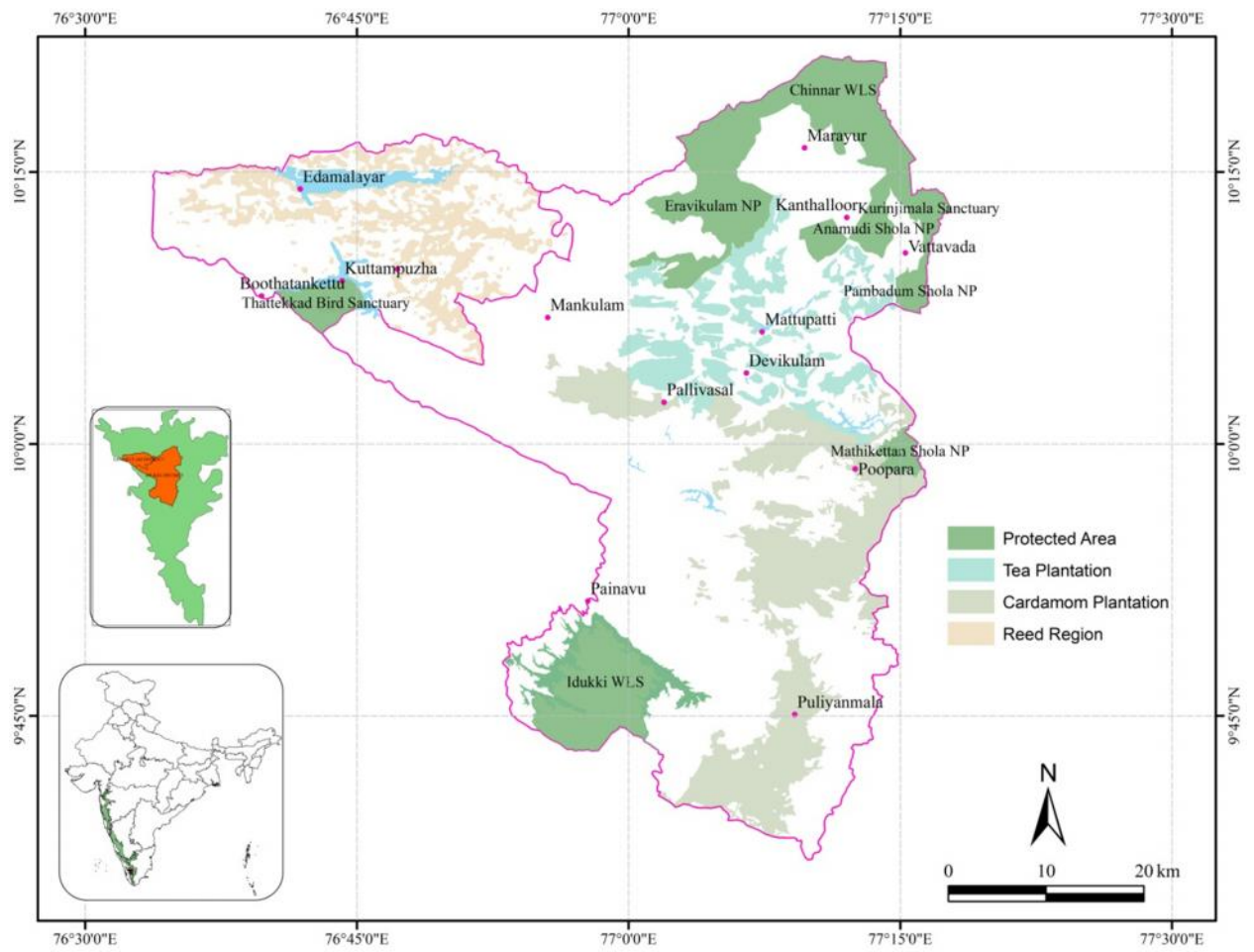


Figure 1 Munnar High Range Mountain Landscape

2 REVIEW OF LITERATURE

Literatures pertaining to butterflies of High ranges were searched in various online sources like Google Scholar, JSTOR, Bio-one, Research Gate, Sci-Hub, Bibliography of South Asian Ornithology using combinations of keywords including Munnar, Thattakad, Salim Ali Bird Sanctuary, Idukki, Eravikulam, Travancore, Cochin and Chinnar, High Ranges, Nilgiri Tahr, Kurunjimalai, Mannavan Shola, Mathikettan Shola, etc. Apart from Online sources Back Volumes of offline journals were also searched. Different institution libraries and management plans of forest department were collected for gathering the information.

There is a very few published information on butterflies of the HRML. In addition, available management plans, working plans of each division had collected from Kerala forest department. Unpublished butterfly survey reports on conducted in Munnar landscape also collected from the researchers. The secondary data shows there are 254 species of butterflies reported in the Munnar landscape. The studies were conducted in Mannavn shola (Mathew & Mohandass 2001), Idukki wildlife Sanctury (Pulikkal 2012), Maryoor division (Sharma et al), and Puyamkutty forests (Arun and Azeez 2013). Other than these, Palot (2012) studied the migration of Dark Cerulean in Eravikulam National Park..

Table 1 List of Butterflies Recorded in Protected Areas of Study area

Sl no	Location	Number
1	Eravikulam national park	101
2	Pambadum chola national park	100
3	Mathikettan chola national park	52
4	Mannavanshola national park	109
5	Thattekkad bird sanctuary	222
6	Chinnar wildlife sanctuary	156
7	Idukki wildlife sanctuary	76
8	Kurinjimala sanctuary	100

3 BUTTERFLIES OF PROTECTED AREAS IN HIGH RANGES

3.1 CHINNAR WILDLIFE SANCTUARY

Chinnar Wildlife Sanctuary was declared as a wildlife sanctuary in 1984 and is located in the eastern part of the High Ranges of southern Western Ghats of Kerala (between 10° 15' to 10° 21' N latitude 77° 05' to 77° 16' E longitude) has an area of 90.44km². The area falls in the Marayoor and Kanthalloor Panchayat of Devikulam Taluk in Idukki District and is regarded as one of the important protected areas in the Western Ghats due to its ecological, floral and geo-morphological significance. The habitat types range from shola-grassland to dry thorny scrub, across a diverse cultural landscape as well, making it unique in comparison with others. A total of 154 species of butterflies were recorded from Chinnar sanctuary of which 11 species are endemic to western Ghat.

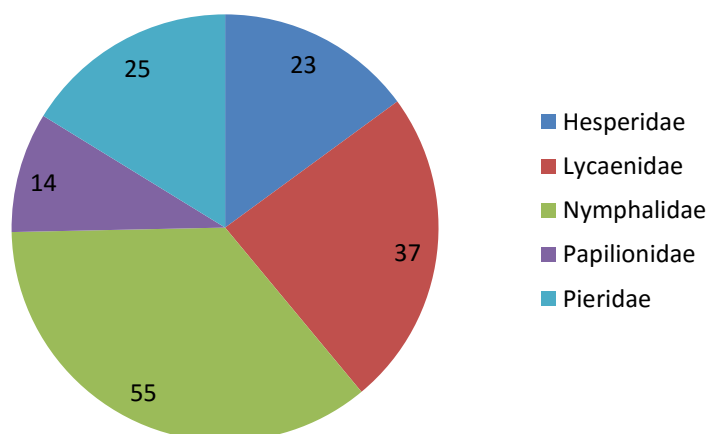


Figure 2 Family-wise distribution of butterflies in Chinnar WLS

Table 2 Endemic butterflies of Chinnar WLS

Species	Scientific name	Family
Southern Bird wing	<i>Troides minos</i>	Papilionidae
Nilgiri Grass Yellow	<i>Eurema nilgiriensis</i>	Pieridae
Nilgiri Clouded Yellow	<i>Colias nilagiriensis</i>	Pieridae
Lesser Albatross	<i>Appias wardi</i>	Pieridae
Red-Disk Bush brown	<i>Mycalesis oculus</i>	Nymphalidae
Palani Bush brown	<i>Mycalesis mamerata</i>	Nymphalidae
Tamil Cats eye	<i>Zipaetis saitis</i>	Nymphalidae
Palani Four-ring	<i>Ypthima ypthimoides</i>	Nymphalidae
Nilgiri Tiger	<i>Parantica nilgiriensis</i>	Nymphalidae
White Disc Hedge Blue	<i>Celatoxia albidisca</i>	Lycaenidae
Tamil Dartlet	<i>Oriens concinna</i>	Hesperidae

3.2 ERAVIKULAM NATIONAL PARK

Eravikulam National Park is located in the High Ranges (Kannan Devan Hills) of the Southern Western Ghats in the Devikulam Taluk of Idukki district, Kerala State between 10° 05' - 10° 20' N Latitude and 77° 0' - 77° 10' E Longitude. Eravikulam National Park is 97 km² in extent and consisting mostly of high altitude grasslands that are interspersed with sholas. The main body of the National Park comprises of a high rolling plateau with a base elevation of about 2000 meters from mean sea level. The Park is of undulating terrain and the highest peak is Anamudi (2695 m). Three major types of plant communities are found in the Park- grasslands, shrub land and shola forests. The high plateau and the hills rising above it are primarily covered by grasslands. Shrub lands are seen along the bases of the cliffs. Shola forests are located in the valleys and folds. Turner's valley, which splits the Park roughly in half from north west to southeast, is the deepest. About 109 species of butterflies had been recorded from the National park. Among them 11 species were endemic to Western Ghats.

Eravikulam

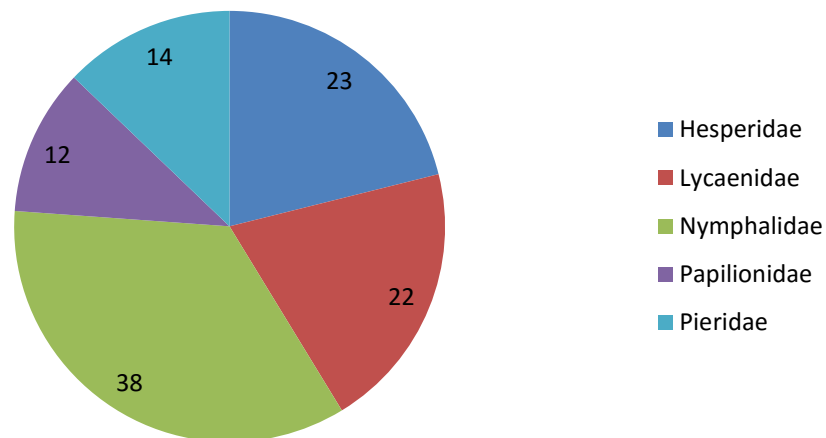


Figure 3 Family-wise distribution of butterflies in Eravikulam NP

Table 3 Endemic butterflies of Eravikulam NP

Species	Scientific name	Family
Southern Bird wing	<i>Troides minos</i>	Papilionidae
Malabar Raven	<i>Papilio dravidarum</i>	Papilionidae
Nilgiri Grass Yellow	<i>Eurema nilgiriensis</i>	Pieridae
Nilgiri Clouded Yellow	<i>Colias nilagiriensis</i>	Pieridae
Red-Disk Bush brown	<i>Mycalesis oculus</i>	Nymphalidae

Palani Bush brown	<i>Mycalesis mamerata</i>	Nymphalidae
Palani Four-ring	<i>Ypthima ypthimoides</i>	Nymphalidae
Nilgiri Tiger	<i>Parantica nilgiriensis</i>	Nymphalidae
White Disc Hedge Blue	<i>Celatoxia albidisca</i>	Lycaenidae
Tamil Dartlet	<i>Oriens concinna</i>	Hesperiidae
Kanara swift	<i>Caltores canaraica</i>	Hesperiidae

3.3 THATTEKKAD BIRD SANCTUARY

Thattekkad Bird Sanctuary falls between 100 7' and 110N latitude and 76040' and 76045'E longitude and is located in the Kerala State, Ernakulam District, Kothamangalam Taluk. The area was previously part of Kuttampuzha Section of Kuttampuzha Range under Malayattoor Division and presently under Idukki Wildlife Division. Thattekkad is the first Bird Sanctuary in Kerala and is a heaven for nature lovers and Bird watchers with a wide variety of flora and fauna. The Thattekkad Bird sanctuary holds 208 species of butterflies in the sanctuary. In which, 17 western Ghat endemic butterflies also included.

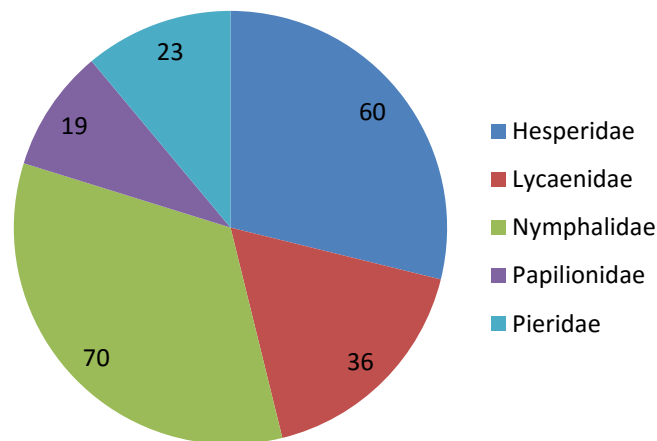


Figure 4 Family-wise distribution of butterflies in Thattekkad Bird Sanctuary

Table 4 Endemic butterflies of Thattekkad Bird Sanctuary

Species	Scientific name	Family
Southern Bird wing	<i>Troides minos</i>	Papilionidae
Malabar rose	<i>Pachliopta pandiyana</i>	Papilionidae
Malabar banded Swallowtail	<i>Papilio liomedon</i>	Papilionidae
Malabar Raven	<i>Papilio dravidarum</i>	Papilionidae
Malabar banded peacock	<i>Papilio buddha</i>	Papilionidae
Lesser Albatross	<i>Appias wardi</i>	Pieridae
Travancore Evening brown	<i>Parantirrhoea marshalli</i>	Nymphalidae

Tamil Cats eye	<i>Zipaetis saitis</i>	Nymphalidae
South Indian blue oak leaf	<i>Kallima horsfieldii</i>	Nymphalidae
Malabar tree Nymph	<i>Idea malabarica</i>	Nymphalidae
Dingy scrub hopper	<i>Aeromachus dubius</i>	Hesperiidae
Bicolour ace	<i>Sovia hyrtacus</i>	Hesperiidae
Madras ace	<i>Thoressa honorei</i>	Hesperiidae
Un branded ace	<i>Thoressa astigmata</i>	Hesperiidae
Sitala ace	<i>Thoressa sitala</i>	Hesperiidae
Eversheds ace	<i>Thoressa evershedi</i>	Hesperiidae
yellow base tree flitter	<i>Quedara basiflava</i>	Hesperiidae

3.4 IDUKKI WILDLIFE SANCTUARY

The sanctuary is a fragmented part of the High Range forests separated from the main tract of vegetation extending between Munnar Hills which includes Eravikulam National Park, Shola National Parks, Kurinjimala Sanctuary and Chinnar Wildlife Sanctuary and Periyar Tiger Reserve. Idukki Wildlife Sanctuary is an isolated patch of forests which was cut off from the adjacent areas due to development process and habitat destruction. The entire sanctuary forms the catchment area of the Idukki Hydro Electric Project. 217 species of birds are recorded from this sanctuary including 13 western hat endemic species. 75 species of butterflies had reported from the Idukki wildlife sanctuary. 3 endemic butterflies also recorded from the sanctuary.

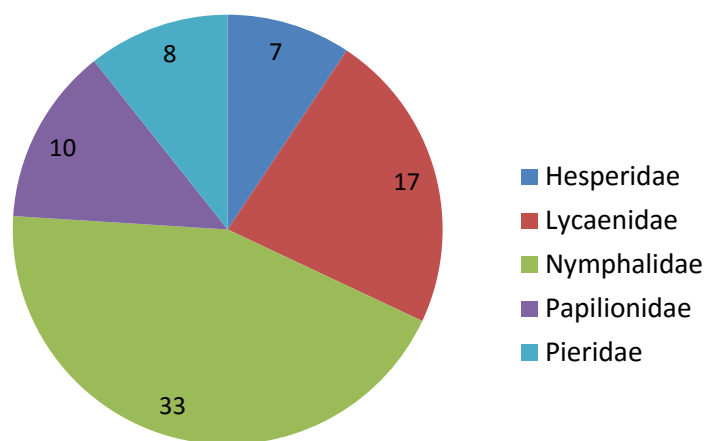


Figure 5 Family wise distribution of butterflies in Idukki wildlife Sanctuary

Table 5 Endemic butterflies of Idukki Wild life Sanctuary

Species	Scientific name	Family
Southern Birdwing	<i>Troides minos</i>	Papilionidae
Malabar tree Nymph	<i>Idea malabarica</i>	Nymphalidae
White Disc Hedge Blue	<i>Celatoxia albidisca</i>	Lycaenidae

3.5 MANNAVAN SHOLA NATIONAL PARK

The Mannavan Shola located on 10o 10' 00" to 10o 12' 18" N latitudes and 77o 09' 50" to 77o 12' 18" E longitudes which forms the largest shola forest patch in the Kerala State. The size of Mannavan shola is approximately is about 5.18 km². This forest patch is comes under the jurisdiction of Marayur forest range of Idukki district. Pambadam Shola, Pullaradi Shola and Idivara Shola are the adjacent areas to the Mannavan Shola. The altitude varies from 1600m to 2100m. The annual rainfall ranges between 2,000-3.000 mm. The major vegetation type is Southern Subtropical Hill Forests which transforms to Southern Montane Wet Temperare Forests (Champion and Seth, 1968) towards the top. Many habitation are suitated in an around the national park. Few portion of the shola is given for lease from 1960 onwards. The forest detoration is more due top anthropogenic pressures. Mannavan shola has rich biodiversity and it's very peculiar. 104 species of butterflies had reported from Mannavan shola National Park, among 12 were endemic.

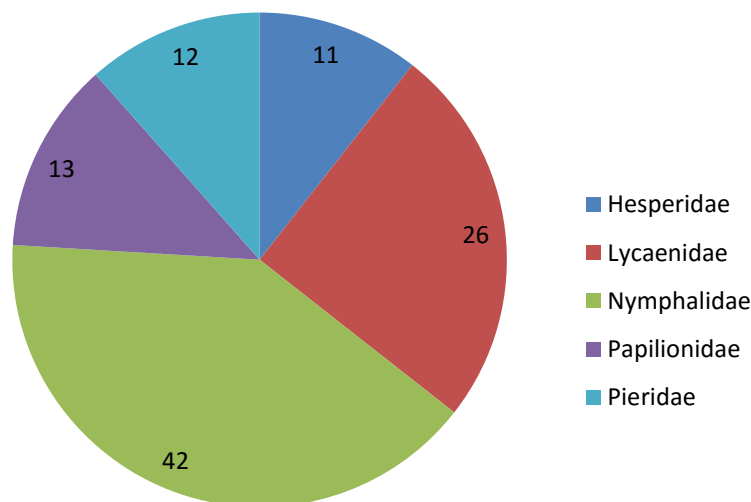


Figure 6 Family-wise distribution of butterflies in Mannavan shola National park

Table 6 Endemic butterflies of Mannavan shola National Park

Species	Scientific name	Family
Southern Bird wing	<i>Troides minos</i>	Papilionidae
Malabar rose	<i>Pachliopta pandiyana</i>	Papilionidae
Malabar banded peacock	<i>Papilio buddha</i>	Papilionidae
Red-Disk Bush brown	<i>Mycalesis oculus</i>	Nymphalidae
Tamil Cats eye	<i>Zipaetis saitis</i>	Nymphalidae
Palani Four-ring	<i>Ypthima ypthimoides</i>	Nymphalidae
Nilgiri Tiger	<i>Parantica nilgiriensis</i>	Nymphalidae
Malabar tree Nymph	<i>Idea malabarica</i>	Nymphalidae
White Disc Hedge Blue	<i>Celatoxia albidisca</i>	Lycaenidae
Shiva sunbeam	<i>Curetis siva</i>	Lycaenidae
Dingy scrub hopper	<i>Aeromachus dubius</i>	Hesperiidae
Sitala ace	<i>Thoressa sitala</i>	Hesperiidae

4 REFERENCES

- 1) Checklist of butterflies of Eravikulam national park- Unpublished report. Kerala Forest Department.
- 2) Checklist of butterflies of kurinjimala sanctuary - personal communication. Unpublished report. Kerala Forest Department
- 3) Checklist of butterflies of Mannavan shoal national park- personal communication. Unpublished report. Kerala Forest Department.
- 4) Checklist of butterflies of Mathikettan shola national park- personal communication. Unpublished report. Kerala Forest Department.
- 5) Kerala Forest Department. Checklist of butterflies of Pambadumshola national park- personal communication. Unpublished report.
- 6) Kerala Forest Department. Management plan for Chinnar wildlife sanctuary
- 7) Kerala Forest Department. Management plan for Eravikulam national park
- 8) Kerala Forest Department. Management plan for Idukki wildlife sanctuary
- 9) Kerala Forest Department. Management plan for Thattekkad bird sanctuary
- 10) Menon, A.R.R. 1997. Vegetation mapping and analysis of Eravikulam National Park using remote sensing techniques. KFRI Research Report 130: 21p.
- 11) P.R. Arun & P.A Azeez, 2003. On the butterfly of Puyamkutty forests, Kerala, India. Zoo's Print Journal 18(12): 1276-1279.
- 12) Palot, M.J. (2012). A note on the migration of Dark Cerulean *Jamides bochus* (Stoll) (Lepidoptera: Lycaenidae) in Eravikulam National Park, Idukki District, Kerala, India. *Journal of Threatened Taxa* 4(14): 3373–3374.
- 13) Pulikkal, U K 2012. A report on the survey of butterfly fauna of Idukki wildlife sanctuary, Kerala.

Table 7 List of Butterflies recorded in HRML

Species	Scientific name	Family	Endemic	C-WLS	ENP	T-BS	I-WLS	M-NP
1. Southern Bird wing	<i>Troides minos</i>	Papilionidae	*	*	*	*	*	*
2. Malabar rose	<i>Pachliopta pandiyana</i>	Papilionidae	*			*		*
3. Common Rose	<i>Pachliopta aristolochiae</i>	Papilionidae		*	*	*	*	*
4. Crimson Rose	<i>Pachliopta hector</i>	Papilionidae		*	*	*	*	*
5. Common Bluebottle	<i>Graphium sarpedon</i>	Papilionidae		*	*	*	*	*
6. Common Jay	<i>Graphium doson</i>	Papilionidae		*		*	*	*
7. Tailed Jay	<i>Graphium agamemnon</i>	Papilionidae		*	*	*	*	*
8. Spot Swordtail	<i>Graphium nomius</i>	Papilionidae		*		*		
9. Five bar Sword tail	<i>Graphium androcles</i>	Papilionidae				*		
10. Common mime	<i>Papilio clytia</i>	Papilionidae		*	*	*		
11. Lime Butterfly	<i>Papilio demoleus</i>	Papilionidae		*	*	*	*	*
12. Malabar banded Swallowtail	<i>Papilio liomedon</i>	Papilionidae	*			*		
13. Malabar Raven	<i>Papilio dravidarum</i>	Papilionidae	*		*	*		
14. Red Helen	<i>Papilio helenus</i>	Papilionidae		*	*	*	*	*
15. Common Mormon	<i>Papilio polytes</i>	Papilionidae		*	*	*	*	*
16. Blue Mormon	<i>Papilio polymnestor</i>	Papilionidae		*	*	*	*	*
17. Paris Peacock	<i>Papilio paris</i>	Papilionidae		*	*	*		*
18. Malabar banded peacock	<i>Papilio buddha</i>	Papilionidae	*			*		*
19. Common Banded Peacock	<i>Papilio crino</i>	Papilionidae		*		*		
20. Common Emigrant	<i>Catopsilia pomona</i>	Pieridae		*	*	*	*	
21. Mottled Emigrant	<i>Catopsilia pyranthe</i>	Pieridae		*	*	*	*	*
22. Small Grass Yellow	<i>Eurema brigitta</i>	Pieridae		*	*	*		*
23. Spotless Grass Yellow	<i>Spotless Grass Yellow</i>	Pieridae		*		*		*
24. Common Grass Yellow	<i>Eurema hecabe</i>	Pieridae		*	*	*	*	

Species	Scientific name	Family	Endemic	C-WLS	ENP	T-BS	I-WLS	M-NP
25. Three Spot Grass Yellow	<i>Eurema blanda</i>	Pieridae		*		*	*	*
26. One spot grass yellow	<i>Eurema andersoni</i>	Pieridae				*		
27. Nilgiri Grass Yellow	<i>Eurema nilgiriens</i>	Pieridae	*	*	*			
28. Nilgiri Clouded Yellow	<i>Colias nilagiriensis</i>	Pieridae	*	*	*			
29. Common jezebel	<i>Delias eucharis</i>	Pieridae		*	*	*	*	*
30. Psyche	<i>Leptosia nina</i>	Pieridae		*		*	*	*
31. Painted Sawtooth	<i>Prioneris sita</i>	Pieridae		*		*		
32. Indian cabbage white	<i>Pieris canidia</i>	Pieridae		*	*			*
33. Common Gull	<i>Cepora nerissa</i>	Pieridae		*	*	*		
34. Lesser gull	<i>Cepora nadina</i>	Pieridae				*		*
35. Pioneer or Caper White	<i>Belenois aurota</i>	Pieridae		*	*	*		
36. Plain Puffin	<i>Appias indra</i>	Pieridae		*	*	*		*
37. Spot Puffin	<i>Appias lalage</i>	Pieridae			*			*
38. Chocolate albatross	<i>Appias lyncida</i>	Pieridae				*		
39. Common Albatross	<i>Appias albina</i>	Pieridae		*	*	*	*	*
40. Lesser Albatross	<i>Appias wardi</i>	Pieridae	*	*		*		
41. Great Orange Tip	<i>Hebomoia glaucippe</i>	Pieridae			*	*	*	*
42. Small Orange Tip	<i>Colotis etrida</i>	Pieridae		*		*		
43. Plain Orange Tip	<i>Colotis eucharis</i>	Pieridae		*		*		
44. Crimson Tip	<i>Colotis danae</i>	Pieridae		*		*		
45. Blue – Spotted Arab	<i>Colotis phisadia</i>	Pieridae		*				
46. Large Salmon Arab	<i>Colotis fausta</i>	Pieridae		*				
47. White Orange Tip	<i>Ixias marianne</i>	Pieridae		*		*		
48. Yellow Orange Tip	<i>Ixias pyrene</i>	Pieridae		*		*		
49. Common Wanderer	<i>Pareronia valeria</i>	Nymphalidae		*		*		

Species	Scientific name	Family	Endemic	C-WLS	ENP	T-BS	I-WLS	M-NP
50. Southern duffer	<i>Discophora lepida</i>	Nymphalidae				*		
51. Travancore Evening brown	<i>Parantirrhoea marshalli</i>	Nymphalidae	*			*		
52. Common Evening Brown	<i>Melanitis leda</i>	Nymphalidae		*	*	*	*	*
53. Great Evening Brown	<i>Melanitis zitenius</i>	Nymphalidae		*	*	*	*	*
54. Dark Evening Brown	<i>Melanitis phedima</i>	Nymphalidae			*	*		*
55. Common Palmfly	<i>Elymnias hypermnestra</i>	Nymphalidae		*		*		
56. Bamboo Treebrown	<i>Lethe europa</i>	Nymphalidae		*	*	*		*
57. Tamil Treebrown	<i>Lethe drypetis</i>	Nymphalidae			*	*		*
58. Common Treebrown	<i>Lethe rohria</i>	Nymphalidae		*	*	*	*	
59. White bar Bushbrown	<i>Mycalesis anaxias</i>	Nymphalidae		*	*	*		
60. Common Bushbrown	<i>Mycalesis perseus</i>	Nymphalidae		*		*	*	*
61. Dark Banded Bushbrown	<i>Mycalesis mineus</i>	Nymphalidae		*		*		
62. Tamil bush brown	<i>Mycalesis subdita</i>	Nymphalidae				*		
63. Long banded bush brown	<i>Mycalesis visala</i>	Nymphalidae				*		
64. Glad Eye Bushbrown	<i>Mycalesis patnia</i>	Nymphalidae		*		*	*	*
65. Red-Disk Bushbrown	<i>Mycalesis oculus</i>	Nymphalidae	*	*	*			*
66. Palani Bushbrown	<i>Mycalesis mamerata</i>	Nymphalidae	*	*	*			
67. Nigger	<i>Orsotriaena medus</i>	Nymphalidae		*		*	*	*
68. Tamil Cats eye	<i>Zipaetis saitis</i>	Nymphalidae	*	*		*		*
69. Common three ring	<i>Ypthima asterope</i>	Nymphalidae				*		
70. White or Ceylon Four Ring	<i>Ypthima ceylonica</i>	Nymphalidae		*		*		*
71. Common Four-ring	<i>Ypthima huebneri</i>	Nymphalidae		*		*	*	*
72. Common Five-ring	<i>Ypthima baldus</i>	Nymphalidae		*		*	*	
73. Palni Four-ring	<i>Ypthima ypthimoides</i>	Nymphalidae	*	*	*			*
74. Common Nawab	<i>Polyura athamas</i>	Nymphalidae		*		*		*

	Species	Scientific name	Family	Endemic	C-WLS	ENP	T-BS	I-WLS	M-NP
75.	Blue Nawab	<i>Polyura schreiber</i>	Nymphalidae				*		
76.	Tawny Rajah	<i>Charaxes bernardus</i>	Nymphalidae		*		*		
77.	Black rajah	<i>Charaxes solon</i>	Nymphalidae				*		
78.	Tawny Coster	<i>Acraea terpsicore</i>	Nymphalidae		*	*	*		*
79.	Tamil Lacewing	<i>Cethosia nietneri</i>	Nymphalidae		*		*		
80.	Cruiser	<i>Vindula erota</i>	Nymphalidae				*		
81.	Rustic	<i>Cupha erymanthis</i>	Nymphalidae		*	*	*	*	*
82.	Common Leopard	<i>Phalanta phalantha</i>	Nymphalidae		*	*	*	*	
83.	Tamil Yeoman	<i>Cirrochroa thais</i>	Nymphalidae		*	*	*	*	*
84.	Indian Fritillary	<i>Argynnis hyperbius</i>	Nymphalidae		*	*	*		*
85.	Black Prince	<i>Rohana parisatis</i>	Nymphalidae			*	*		
86.	Chestnut Streaked Sailer	<i>Neptis jumbah</i>	Nymphalidae				*		*
87.	Common Sailor	<i>Neptis hylas</i>	Nymphalidae		*	*	*	*	*
88.	Sullied Sailer	<i>Neptis soma</i>	Nymphalidae						*
89.	Shortbanded Sailor	<i>Phaedyma columella</i>	Nymphalidae		*				
90.	Common Lascar	<i>Pantoporia hordonia</i>	Nymphalidae		*		*	*	*
91.	Blackvein sergeant	<i>Athyma ranga</i>	Nymphalidae				*	*	*
92.	Common sergeant	<i>Athyma perius</i>	Nymphalidae				*		*
93.	Colour Sergeant	<i>Athyma nefte</i>	Nymphalidae					*	*
94.	Clipper	<i>Parthenos sylvia</i>	Nymphalidae				*	*	*
95.	Grey Count	<i>Tanaecia lepidea</i>	Nymphalidae		*		*	*	
96.	Commander	<i>Limenitis procris</i>	Nymphalidae		*	*	*	*	*
97.	Redspot Duke	<i>Dophla evelina</i>	Nymphalidae			*	*		
98.	Common Baron	<i>Euthalia aconthea</i>	Nymphalidae		*		*		
99.	Gaudy Baron	<i>Euthalia lubentina</i>	Nymphalidae				*		

	Species	Scientific name	Family	Endemic	C-WLS	ENP	T-BS	I-WLS	M-NP
100.	Baronet	<i>Euthalia nais</i>	Nymphalidae				*		
101.	Angled Caster	<i>Ariadne ariadne</i>	Nymphalidae		*	*	*		
102.	Common Castor	<i>Ariadne merione</i>	Nymphalidae		*		*	*	
103.	Common Map	<i>Cyrestis thyodamas</i>	Nymphalidae		*	*	*	*	*
104.	Common Beak	<i>Libythea lepita</i>	Nymphalidae		*		*		
105.	Club beak	<i>Libythea myrrha</i>	Nymphalidae				*		
106.	Yellow Pansy	<i>Junonia hierta</i>	Nymphalidae		*	*	*		*
107.	Blue Pansy	<i>Junonia orithiya</i>	Nymphalidae		*	*	*		*
108.	Lemon Pansy	<i>Junonia lemonias</i>	Nymphalidae		*	*	*	*	*
109.	Peacock pansy	<i>Junonia almana</i>	Nymphalidae		*	*	*	*	
110.	Grey Pansy	<i>Junonia atlites</i>	Nymphalidae		*		*	*	
111.	Chocolate Pansy	<i>Junonia iphita</i>	Nymphalidae		*	*	*	*	*
112.	Painted Lady	<i>Vanessa cardui</i>	Nymphalidae		*	*	*		
113.	Indian Red Admiral	<i>Vanessa indica</i>	Nymphalidae		*	*	*		*
114.	Blue Admiral	<i>Kaniska canace</i>	Nymphalidae		*	*	*	*	
115.	Great Eggfly	<i>Hypolimnas bolina</i>	Nymphalidae		*	*	*	*	*
116.	Danaid Eggfly	<i>Hypolimnas misippus</i>	Nymphalidae		*	*	*		
117.	South Indian blue oak leaf	<i>Kallima horsfieldii</i>	Nymphalidae	*			*		
118.	Glassy Tiger	<i>Parantica aglea</i>	Nymphalidae		*	*	*	*	*
119.	Nilgiri Tiger	<i>Parantica nilgiriensis</i>	Nymphalidae	*	*	*			*
120.	Blue Tiger	<i>Tirumala limniace</i>	Nymphalidae		*	*	*	*	*
121.	Dark Blue Tiger	<i>Tirumala septentrionis</i>	Nymphalidae		*	*	*	*	*
122.	Plain Tiger	<i>Danaus chrysippus</i>	Nymphalidae		*	*	*		
123.	Stripped or Common Tiger	<i>Danaus genutia</i>	Nymphalidae		*	*	*	*	*
124.	Common Indian Crow	<i>Euploea core</i>	Nymphalidae		*	*	*	*	*

	Species	Scientific name	Family	Endemic	C-WLS	ENP	T-BS	I-WLS	M-NP
125.	Double Banded Crow	<i>Euploea sylvester</i>	Nymphalidae		*				*
126.	Malabar tree Nymph	<i>Idea malabarica</i>	Nymphalidae	*			*	*	*
127.	Small Leopard	<i>Phalanta alcippe</i>	Nymphalidae					*	
128.	Plum Judy	<i>Abisara echerius</i>	Lycaenidae		*		*		*
129.	Ape fly	<i>Spalgis epius</i>	Lycaenidae				*		
130.	Common Pierrot	<i>Castalius rosimon</i>	Lycaenidae		*	*	*	*	
131.	Angled Pierrot	<i>Caleta caleta</i>	Lycaenidae		*		*		*
132.	Banded Blue Pierrot	<i>Discolampa ethion</i>	Lycaenidae		*	*	*		*
133.	Zebra Blue	<i>Tarucus plinius</i>	Lycaenidae		*	*	*		*
134.	Dark Pierrot	<i>Tarucus ananda</i>	Lycaenidae				*		
135.	Dull babul blue	<i>Azanus uranus</i>	Lycaenidae						*
136.	Bright Babul Blue	<i>Azanus ubaldus</i>	Lycaenidae		*	*			
137.	African Babul Blue	<i>Azanus jesous</i>	Lycaenidae		*				*
138.	Indian Cupid	<i>Chilades pandava</i>	Lycaenidae		*	*	*		
139.	White Hedge blue	<i>Udara akasa</i>	Lycaenidae		*	*			*
140.	Common Hedge Blue	<i>Acytolepis puspa</i>	Lycaenidae		*	*	*	*	*
141.	Plain hedge blue	<i>Celastrina lavendularis</i>	Lycaenidae				*		
142.	White Disc Hedge Blue	<i>Celatoxia albidisca</i>	Lycaenidae	*	*	*		*	*
143.	Hampson's Hedge Blue	<i>Acytolepis lilacea</i>	Lycaenidae						*
144.	Quaker	<i>Neopithecops zalmora</i>	Lycaenidae		*		*		
145.	Malayan	<i>Megisba malaya</i>	Lycaenidae				*		
146.	Pale Grass Blue	<i>Pseudozizeeria maha</i>	Lycaenidae		*	*	*		
147.	Dark Grass Blue	<i>Zizeeria karsandra</i>	Lycaenidae		*	*	*		
148.	Lesser Grass Blue	<i>Zizina otis</i>	Lycaenidae		*	*	*	*	
149.	Tiny Grass Blue	<i>Zizula hylax</i>	Lycaenidae		*	*	*	*	*

	Species	Scientific name	Family	Endemic	C-WLS	ENP	T-BS	I-WLS	M-NP
150.	Lime Blue	<i>Chilades lajus</i>	Lycaenidae		*		*		*
151.	Small cupid	<i>Chilades parrhasius</i>	Lycaenidae				*		
152.	Plains Cupid	<i>Chilades pandava</i>	Lycaenidae		*	*	*		*
153.	Grass Jewel	<i>Freyeria trochylus</i>	Lycaenidae		*		*	*	
154.	Gram Blue	<i>Euchrysops cnejus</i>	Lycaenidae		*	*	*	*	*
155.	Tailless line blue	<i>Prosotas dubiosa</i>	Lycaenidae					*	
156.	Forget-Me-Not	<i>Catochrysops strabo</i>	Lycaenidae		*	*	*		*
157.	Pea Blue	<i>Lampides boeticus</i>	Lycaenidae		*	*	*	*	
158.	Dark Cerulean	<i>Jamides bochus</i>	Lycaenidae		*	*	*		*
159.	Common Cerulean	<i>Jamides celeno</i>	Lycaenidae		*	*	*	*	*
160.	Metallic Cerulean	<i>Jamides alecto</i>	Lycaenidae		*	*			*
161.	Common Line Blue	<i>Prosotas nora</i>	Lycaenidae		*	*		*	
162.	Red Pierrot	<i>Talicara nyseus</i>	Lycaenidae		*	*		*	*
163.	Ciliate Blue	<i>Anthene emolus</i>	Lycaenidae		*	*			
164.	Western Centaur Oak Blue	<i>Arhopala pseudocentaurus</i>	Lycaenidae		*		*	*	*
165.	Leaf blue	<i>Amblypodia anita</i>	Lycaenidae						*
166.	Large oak blue	<i>Arhopala amantes</i>	Lycaenidae				*		
167.	Common Acacia Blue	<i>Surendra quercetorum</i>	Lycaenidae		*		*	*	
168.	Common Silver line	<i>Spindasis vulcanus</i>	Lycaenidae		*		*	*	
169.	Long banded Silver line	<i>Spindasis lohita</i>	Lycaenidae						*
170.	Common imperial	<i>Cheritra freja</i>	Lycaenidae						*
171.	Monkey Puzzle	<i>Rathinda amor</i>	Lycaenidae		*		*		
172.	Red spot	<i>Zesius chrysomallus</i>	Lycaenidae				*		
173.	Fluffy tit	<i>Zeltus etolus</i>	Lycaenidae						*
174.	Nilgiri Tit	<i>Chliaria nilgirica</i>	Lycaenidae		*				

	Species	Scientific name	Family	Endemic	C-WLS	ENP	T-BS	I-WLS	M-NP
175.	Common Guava Blue	<i>Virachola isocrates</i>	Lycaenidae		*		*		
176.	Indian Red Flash	<i>Rapala iarbus</i>	Lycaenidae		*		*		
177.	Slate Flash	<i>Rapala manea</i>	Lycaenidae		*		*		
178.	Yam Fly	<i>Loxura atymnus</i>	Lycaenidae				*	*	*
179.	Shiva sunbeam	<i>Curetis siva</i>	Lycaenidae	*					*
180.	Indian Sunbeam	<i>Curetis thetis</i>	Lycaenidae		*		*	*	
181.	Common Banded Awl	<i>Hasora chromus</i>	Hesperiidae		*	*	*		
182.	White Banded Awl	<i>Hasora taminatus</i>	Hesperiidae		*	*	*		*
183.	Orange tail Awl	<i>Bibasis sena</i>	Hesperiidae						*
184.	Orange Awlet	<i>Bibasis harisa</i>	Hesperiidae						*
185.	Indian Awlking	<i>Choaspes benjaminii</i>	Hesperiidae			*	*		
186.	Brown Awl	<i>Badamia exclamationis</i>	Hesperiidae		*		*		*
187.	Common Awl	<i>Hasora badra</i>	Hesperiidae				*		
188.	Common Spotted Flat	<i>Celaenorrhinus leucocera</i>	Hesperiidae		*	*	*	*	*
189.	Malabar Spotted Flat	<i>Celaenorrhinus ambareesa</i>	Hesperiidae		*		*		
190.	Tamil spotted flat	<i>Celaenorrhinus ruficornis</i>	Hesperiidae				*		
191.	Immaculate/Large/Suffused Snow Flat	<i>Tagiades gana</i>	Hesperiidae		*		*		
192.	Water Snow Flat	<i>Tagiades litigiosa</i>	Hesperiidae		*	*	*		*
193.	Common yellow breasted flat	<i>Gerosis bhagava</i>	Hesperiidae				*		
194.	Fulvous Pied Flat	<i>Pseudocoladenia dan</i>	Hesperiidae		*	*	*	*	*
195.	Common Snow Flat	<i>Tagiades japetus</i>	Hesperiidae		*		*		
196.	Tricolour flat	<i>Coladenia indrani</i>	Hesperiidae				*		
197.	Common small flat	<i>Sarangesa dasahara</i>	Hesperiidae				*		
198.	Spotted small flat	<i>Sarangesa purendra</i>	Hesperiidae				*		

	Species	Scientific name	Family	Endemic	C-WLS	ENP	T-BS	I-WLS	M-NP
199.	Angled Flat	<i>Tapena twaitthesi</i>	Hesperiidae		*		*		
200.	Banded angle/ chestnut angle	<i>Odontoptilum angulata</i>	Hesperiidae				*		
201.	Golden Angle	<i>Caprona ransonnettii</i>	Hesperiidae		*		*		
202.	Spotted angle	<i>Caprona agama</i>	Hesperiidae				*		
203.	African Mallow/ Marbled Skipper	<i>Gomalia elma</i>	Hesperiidae		*		*		
204.	Indian Grizzled / Indian Skipper	<i>Spialia galba</i>	Hesperiidae		*		*		
205.	Pygmy scrub hopper	<i>Aeromachus pygmaeus</i>	Hesperiidae				*		
206.	Dingy scrub hopper	<i>Aeromachus dubius</i>	Hesperiidae	*			*		*
207.	Bush hopper	<i>Ampittia dioscorides</i>	Hesperiidae				*		
208.	Indian ace	<i>Halpe homolea</i>	Hesperiidae				*		
209.	Moore's Ace	<i>Halpe porus</i>	Hesperiidae				*		*
210.	Bicolour ace	<i>Sovia hyrtacus</i>	Hesperiidae	*			*		
211.	Madras ace	<i>Thoressa honorei</i>	Hesperiidae	*			*		
212.	Un branded ace	<i>Thoressa astigmata</i>	Hesperiidae	*			*		
213.	Sitala ace	<i>Thoressa sitala</i>	Hesperiidae	*			*		*
214.	Evershed's ace	<i>Thoressa evershedii</i>	Hesperiidae	*			*		
215.	Chestnut Bob	<i>Lambrix salsala</i>	Hesperiidae		*		*	*	
216.	Coon	<i>Sancus fuligo</i>	Hesperiidae				*	*	
217.	Common Banded Demon	<i>Notocrypta paralysos</i>	Hesperiidae		*	*	*		
218.	Restricted Demon	<i>Notocrypta curvifascia</i>	Hesperiidae		*		*		
219.	Grass Demon	<i>Udaspes folus</i>	Hesperiidae		*	*	*	*	
220.	Maculate Lancer	<i>Salanoemia sala</i>	Hesperiidae				*		
221.	Vindhyan bob	<i>Arnetta vindhiana</i>	Hesperiidae				*		
222.	Indian Palm Bob	<i>Suastus gremius</i>	Hesperiidae		*		*		

	Species	Scientific name	Family	Endemic	C-WLS	ENP	T-BS	I-WLS	M-NP
223.	Small palm bob	<i>Suastus minutus</i>	Hesperiidae				*		
224.	Wax dart	<i>Cupitha purreea</i>	Hesperiidae				*		
225.	Hedge hopper	<i>Baracus vittatus</i>	Hesperiidae				*		
226.	Brush flitter	<i>Hyarotis microsticta</i>	Hesperiidae				*		
227.	Tree flitter	<i>Hyarotis adrastus</i>	Hesperiidae				*		
228.	Yellow base tree flitter	<i>Quedara basiflava</i>	Hesperiidae	*			*		
229.	Giant red eye	<i>Gangara thyrasis</i>	Hesperiidae				*		
230.	Palm red eye	<i>Erionota torus</i>	Hesperiidae				*		
231.	Common red eye	<i>Matapa aria</i>	Hesperiidae				*		
232.	Common Grass Dart	<i>Taractrocera maevius</i>	Hesperiidae		*		*		
233.	Tamil Grass Dart	<i>Taractrocera ceramas</i>	Hesperiidae		*	*	*		*
234.	Tamil Dart let	<i>Oriens concinna</i>	Hesperiidae	*	*	*			
235.	Palani dart	<i>Potanthus palnia</i>	Hesperiidae			*	*		
236.	Pale palm dart	<i>Telicota colon</i>	Hesperiidae				*		
237.	Dark palm dart	<i>Telicota ancilla</i>	Hesperiidae				*		
238.	Indian/Common Dartlet	<i>Oriens goloides</i>	Hesperiidae		*			*	
239.	African straight swift	<i>Parnara naso</i>	Hesperiidae				*		
240.	Dingy swift	<i>Gegenes nostrodamus</i>	Hesperiidae				*		
241.	Bevan's swift	<i>Pseudoborbo bevani</i>	Hesperiidae				*		
242.	Rice Swift	<i>Borbo cinnara</i>	Hesperiidae		*	*	*	*	
243.	Spot Puffin	<i>Appias lalage</i>	Pieridae		*				
244.	Black Swift	<i>Caltoris kumara</i>	Hesperiidae			*	*		
245.	Large branded swift	<i>Pelopidas subochracea</i>	Hesperiidae			*	*		
246.	Dark branded swift	<i>Pelopidas agna</i>	Hesperiidae			*			
247.	Small branded swift	<i>Pelopidas mathias</i>	Hesperiidae			*			

	Species	Scientific name	Family	Endemic	C-WLS	ENP	T-BS	I-WLS	M-NP
248.	Conjoined swift	<i>Pelopidas conjuncta</i>	Hesperiidae			*			
249.	Great swift	<i>Pelopidas assamensis</i>	Hesperiidae			*			
250.	White branded swift	<i>Pelopidas thrax</i>	Hesperiidae			*			
251.	Countigious swift	<i>Polytremis lubricans</i>	Hesperiidae			*			
252.	Paintbrush swift	<i>Baoris farri</i>	Hesperiidae			*			
253.	Kanara swift	<i>Caltoris canaraica</i>	Hesperiidae	*		*			
254.	Philippine swift	<i>Caltoris philippina</i>	Hesperiidae			*			

Endemics- Species Endemic to Western ghats; **C-WLS-** Chinnar Wildlife Sanctuary; **E-NP-** Eravikulam National Park; **T-BS-** Thattekkad Bird Sanctuary; **I-WLS-** Idukki Wildlife Sanctuary; **M-NP-** Mannavan shola National Park